

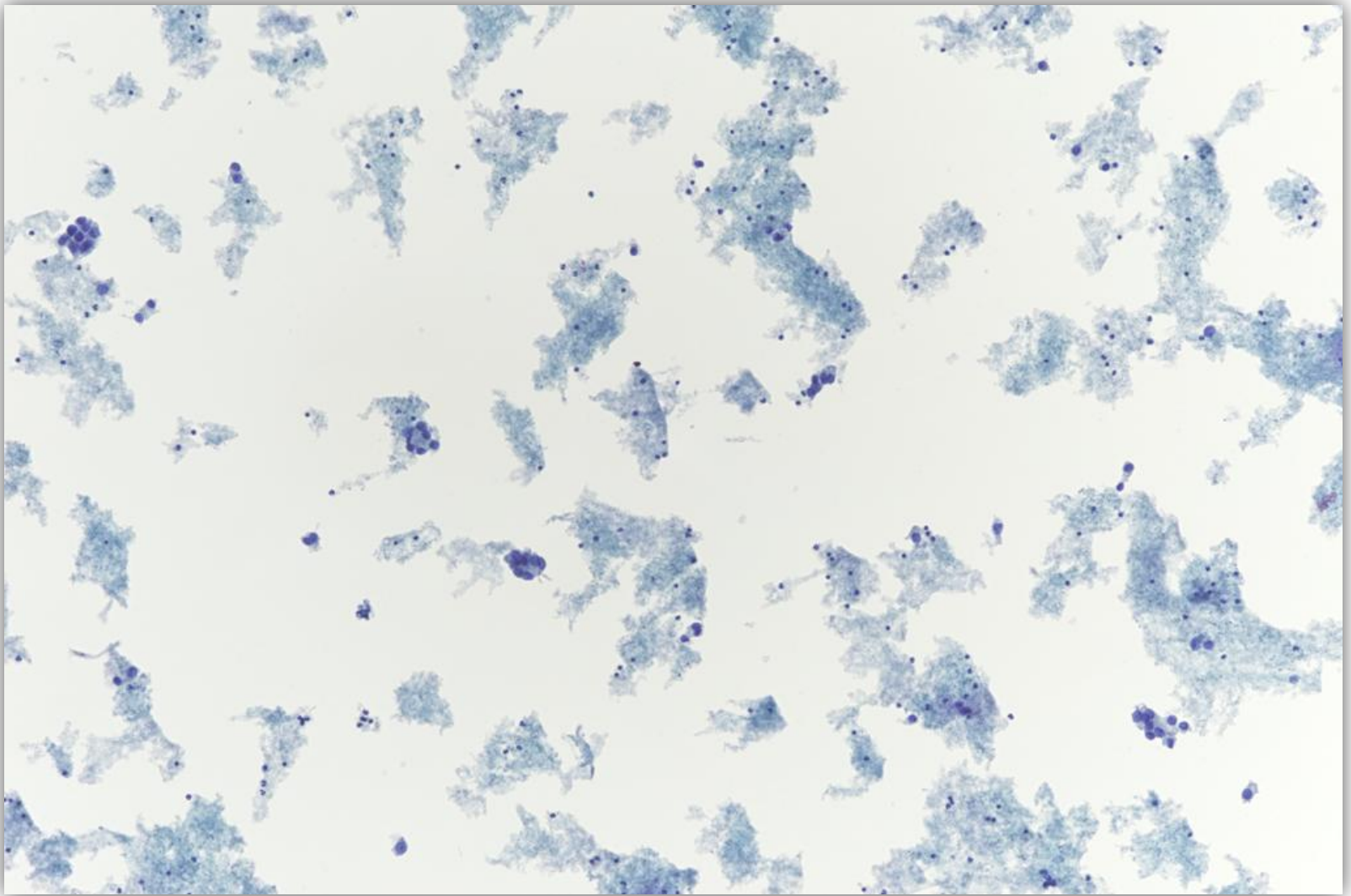
**Male, 86 yo.
Unremarkable medical history.**

**Incidental discover of a 6x4x4 cm mass in
the right thyroid lobe.**

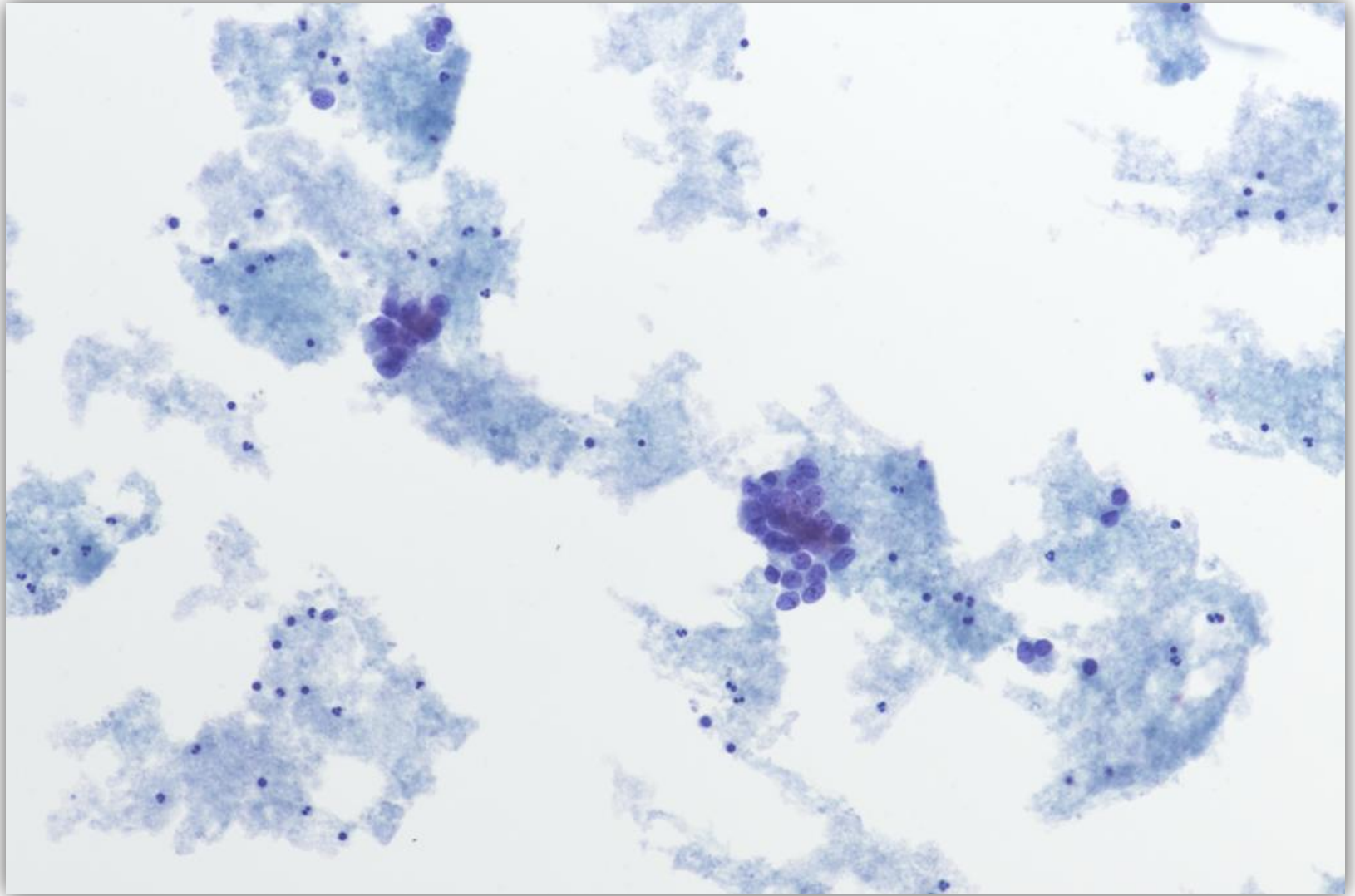


Thyroid FNA

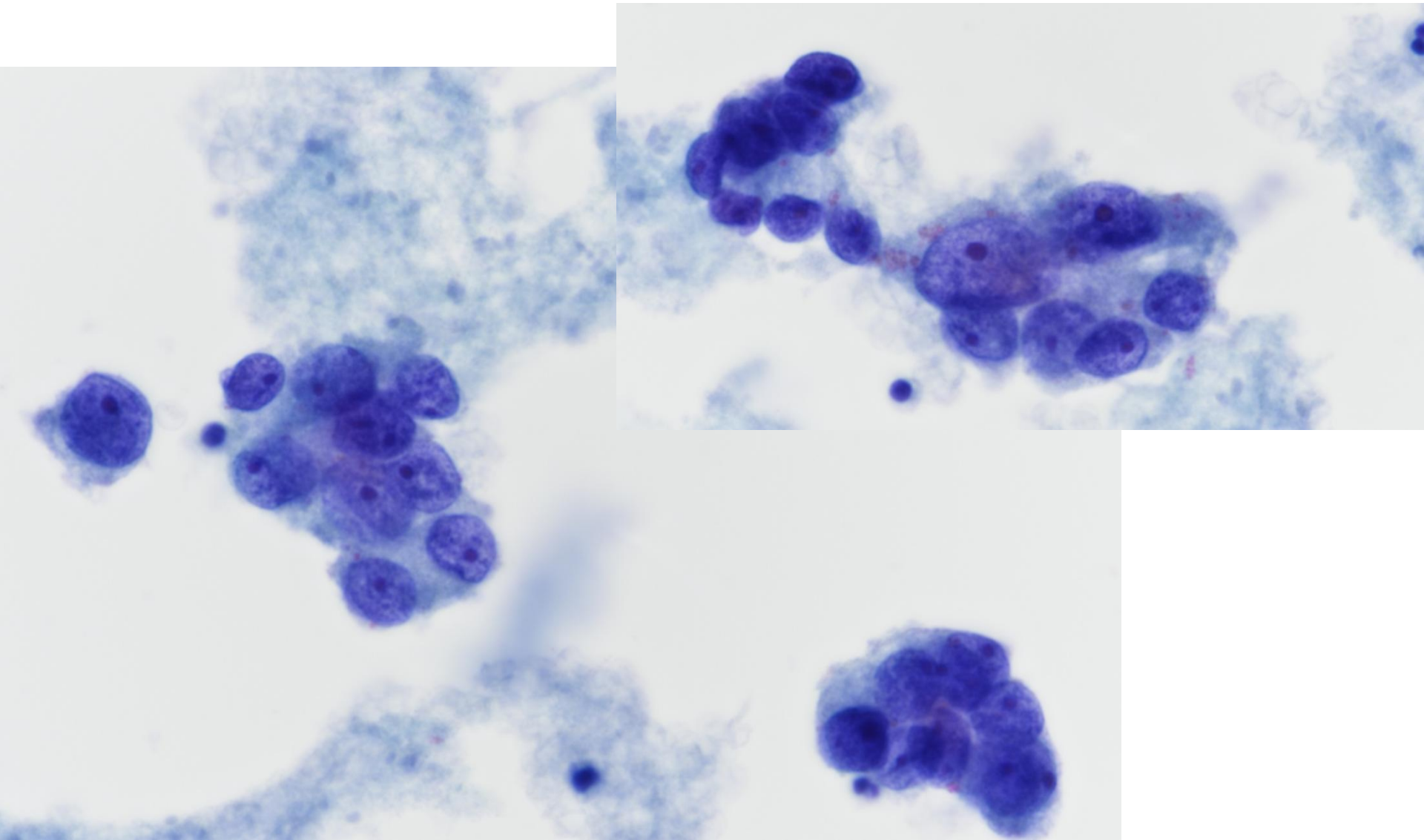
Pap, smear



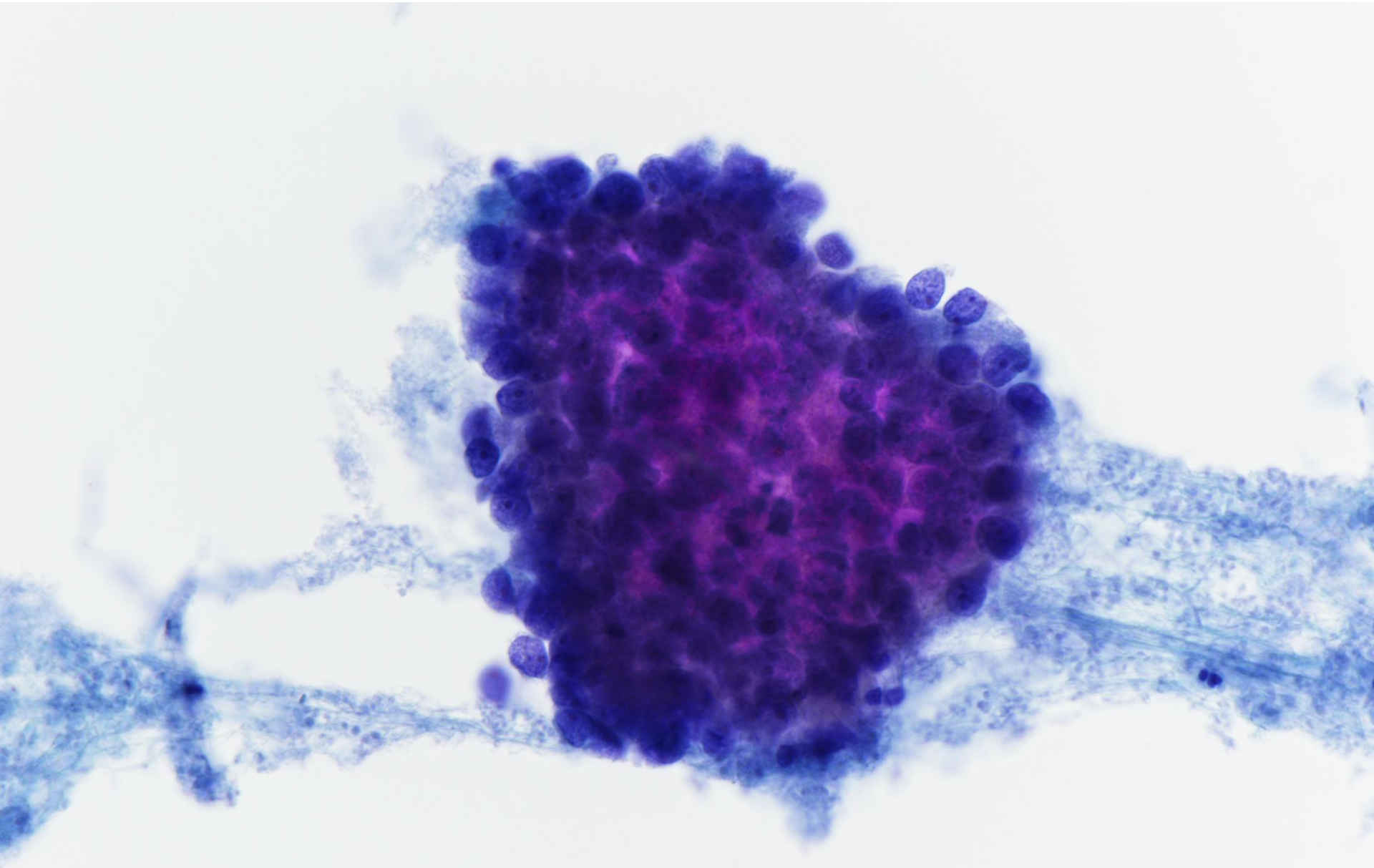
Pap, smear



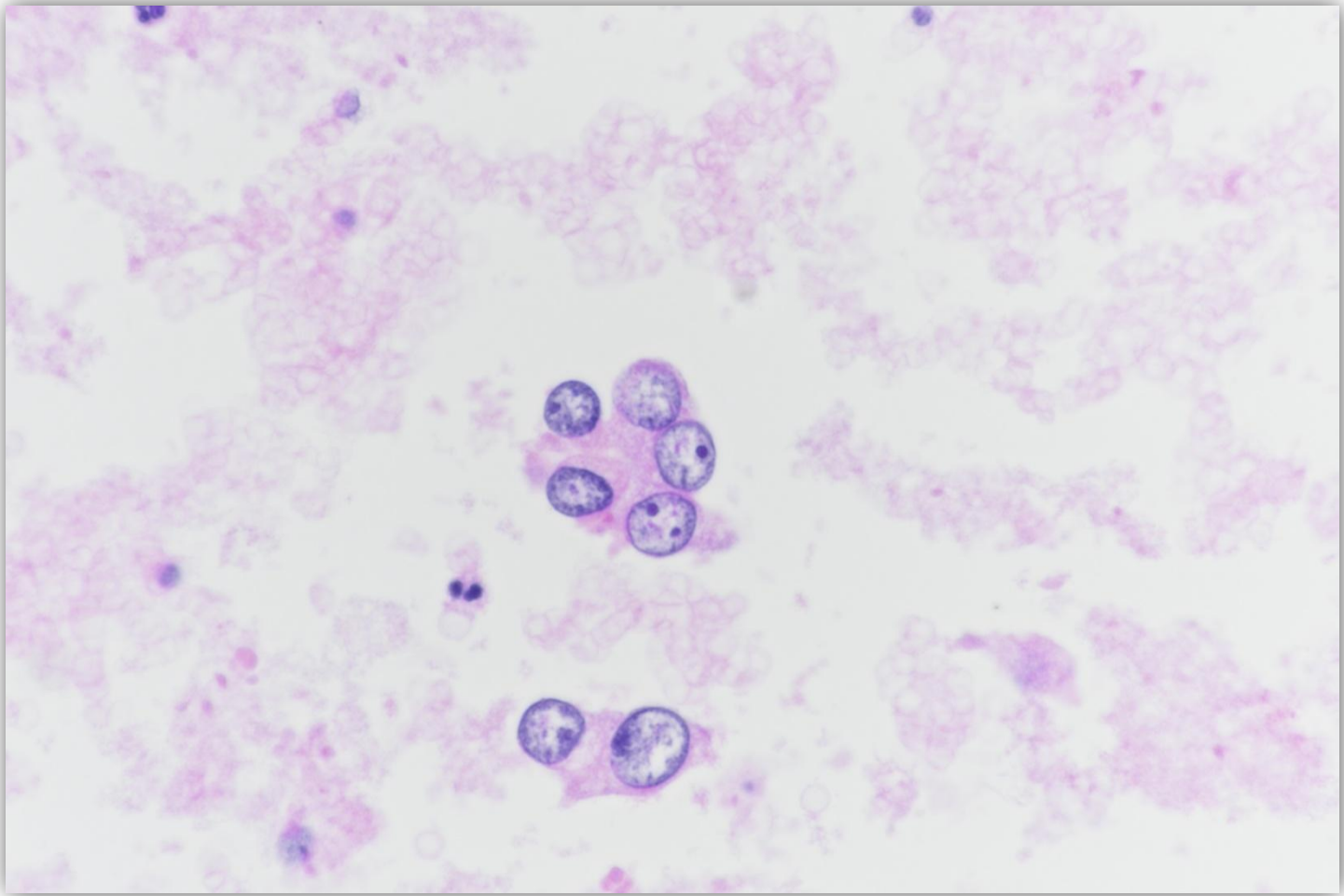
Pap, smear



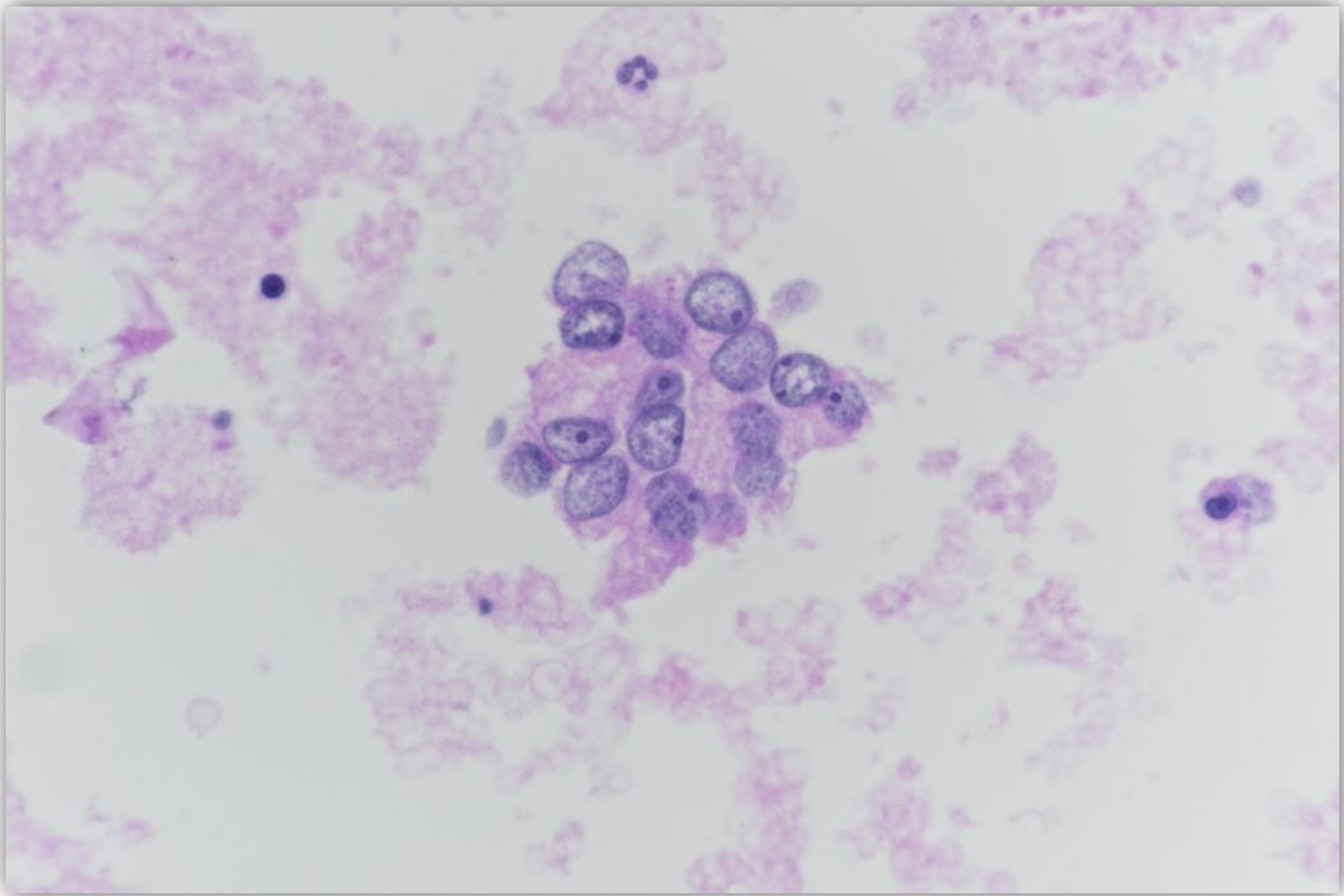
Pap, smear



H&E, Cell blok

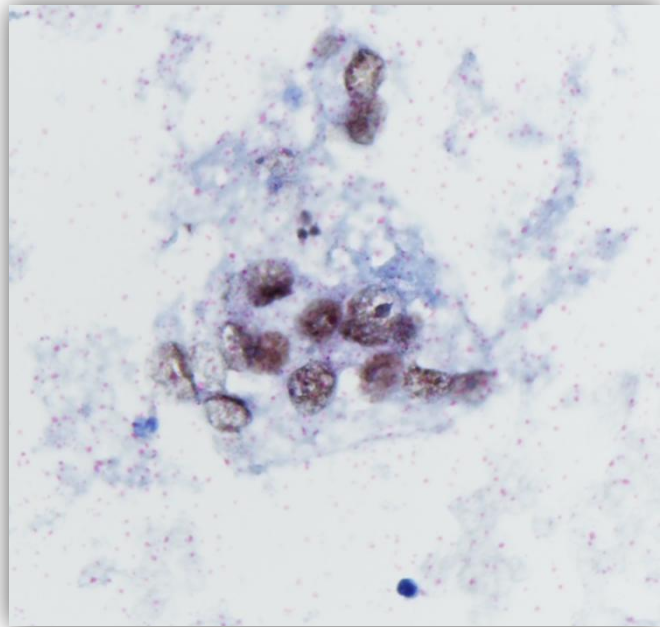


H&E, Cell blok

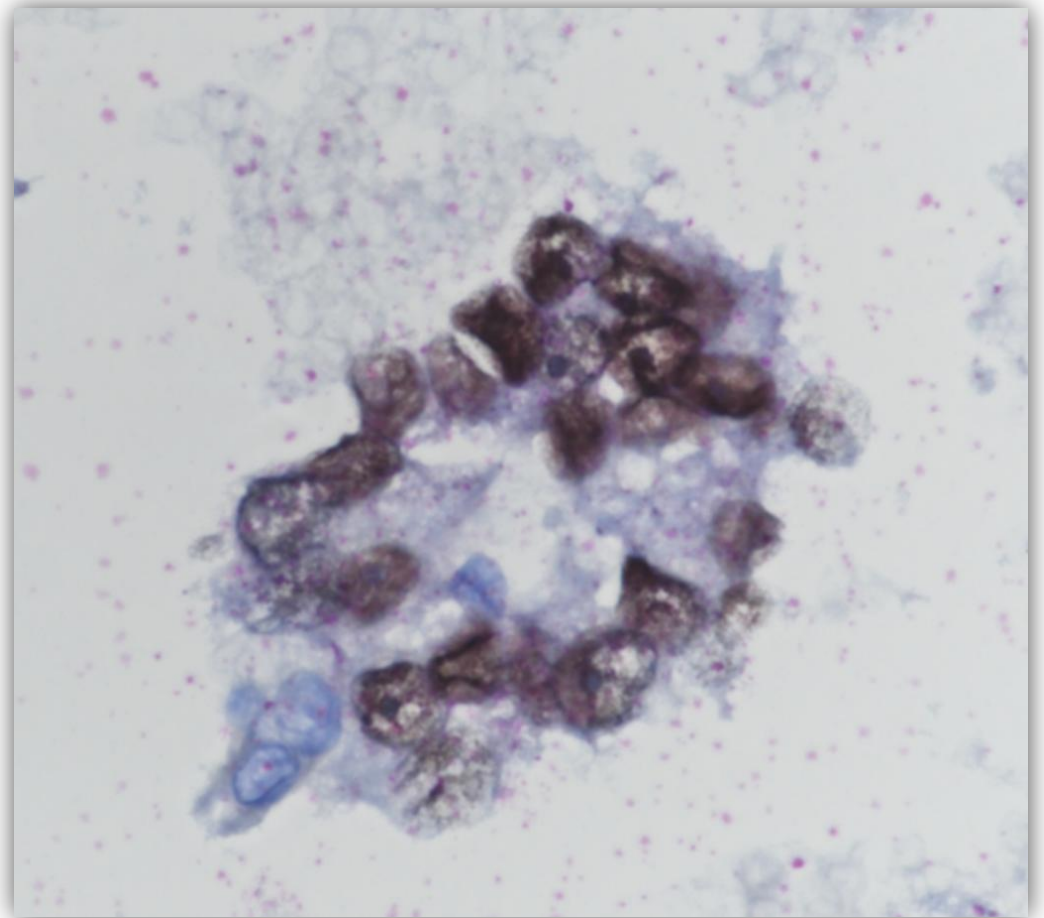


Immunocytochemistry

TTF-1



Thyroglobulin



Immunocytochemistry

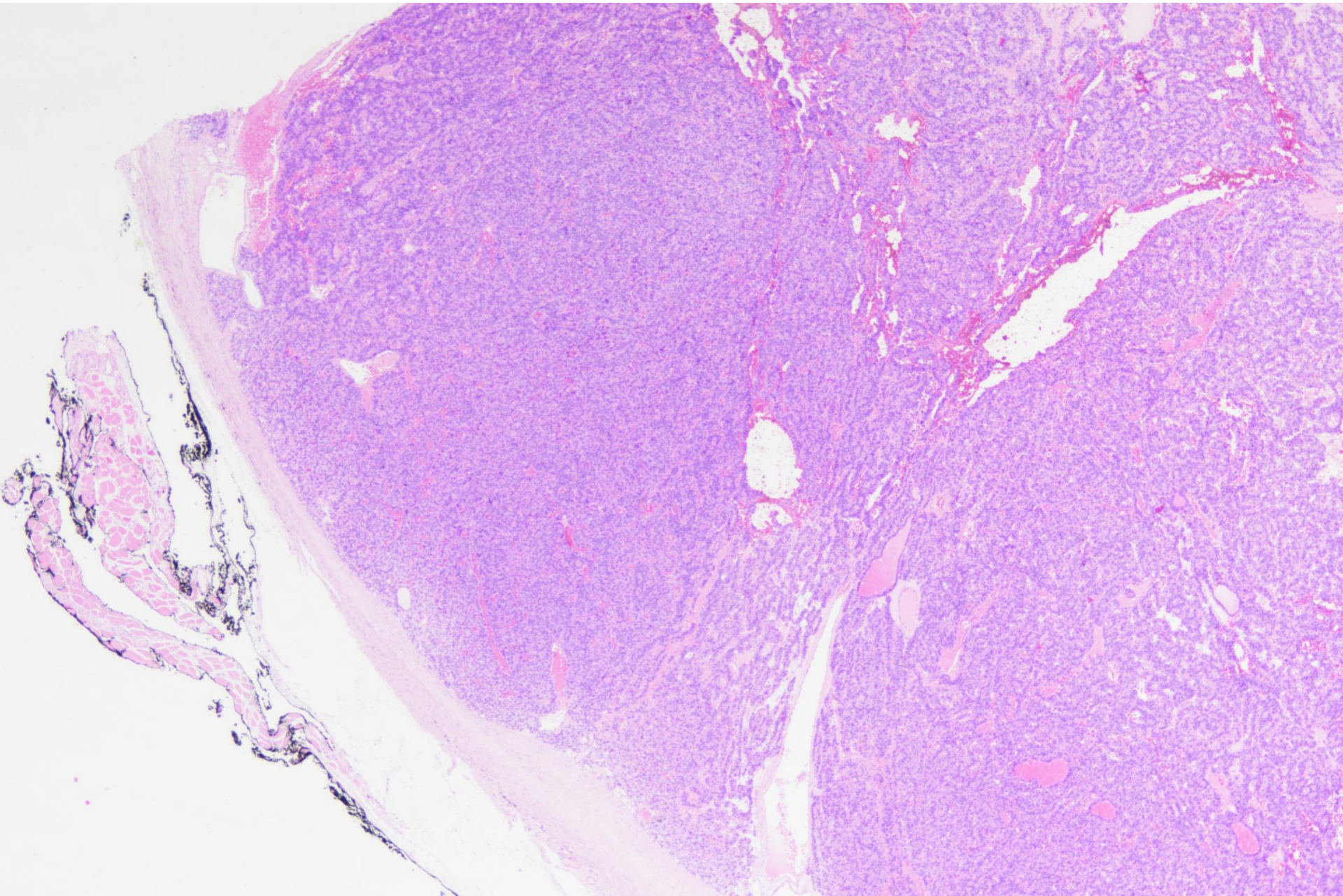
HBME-1, Galectine 3, CEA, Calcitonin:

negative

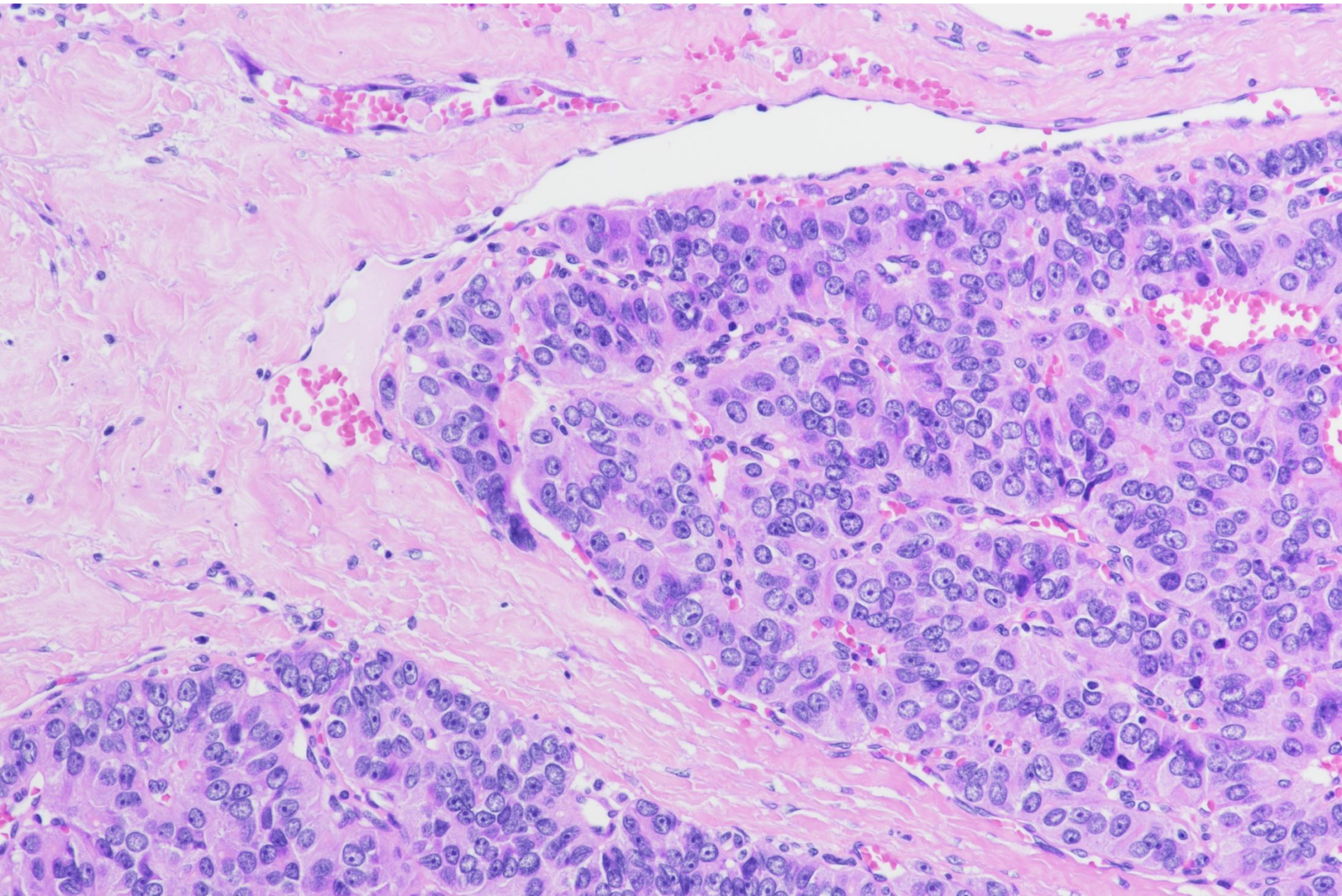
Cytological diagnosis:

**Follicular neoplasm
(Bethesda IV)**

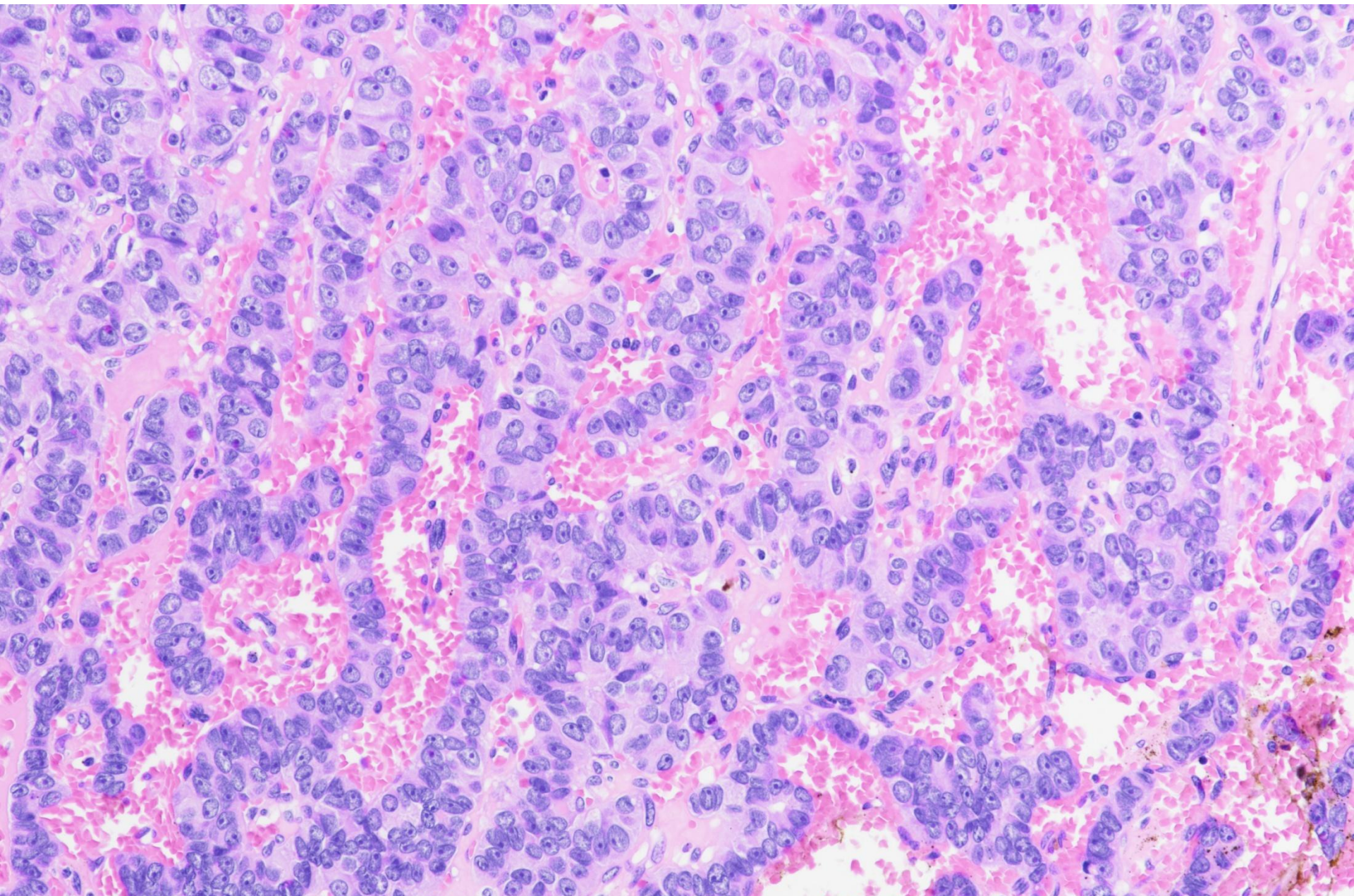
Histology



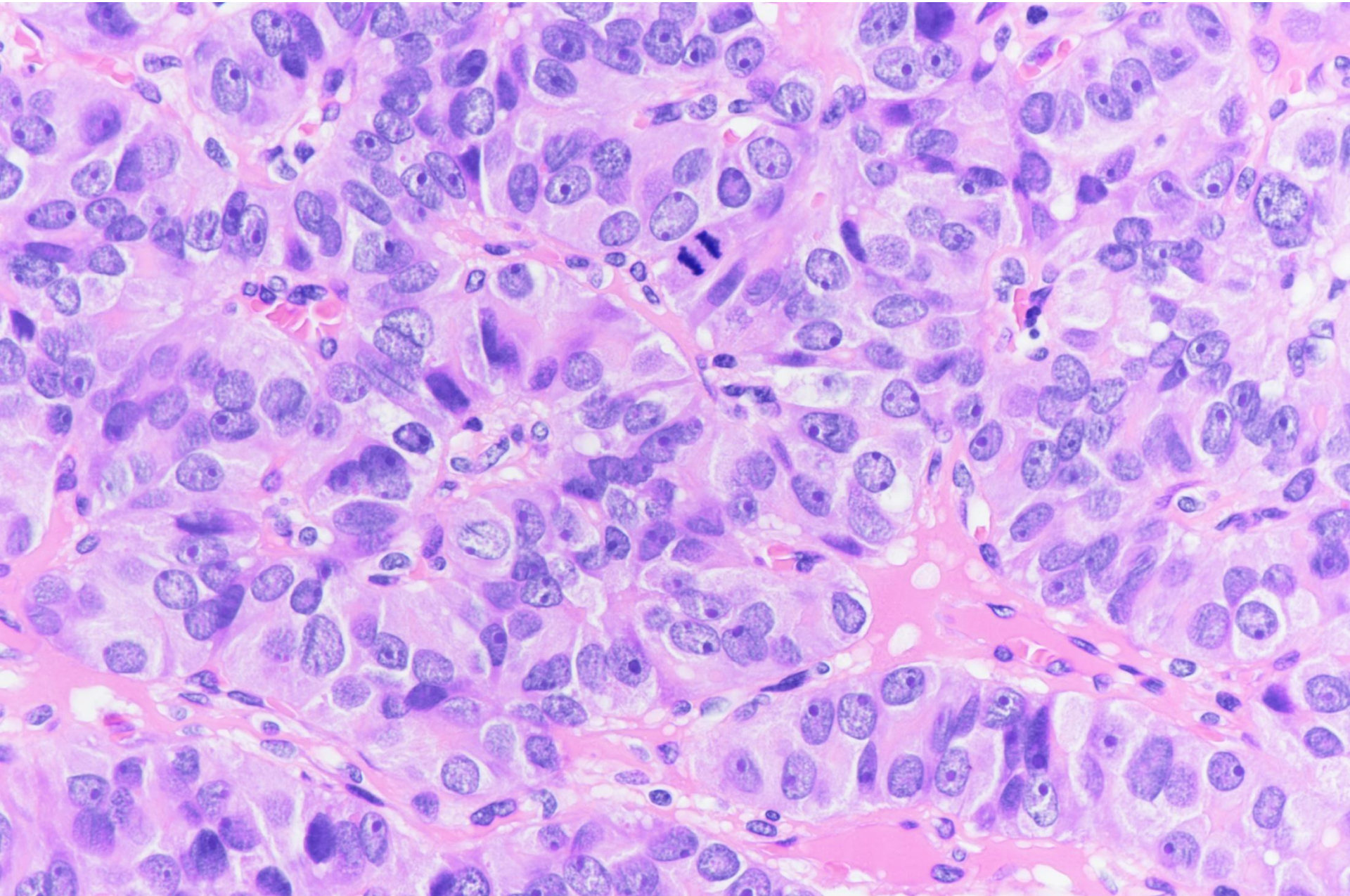
Histology



Histology



Histology



Histological diagnosis

Poorly differentiated (insular) thyroid carcinoma

References:

Purkait S, Agarwal S, Mathur SR, Jain D, Iyer VK. Fine needle aspiration cytology features of poorly differentiated thyroid carcinoma. Cytopathology. 2015 Dec 12.

Kane SV, Sharma TP. Cytologic diagnostic approach to poorly differentiated thyroid carcinoma: a single-institution study. Cancer Cytopathol. 2015 Feb;123(2):82-91.