

Male, 82 yo.

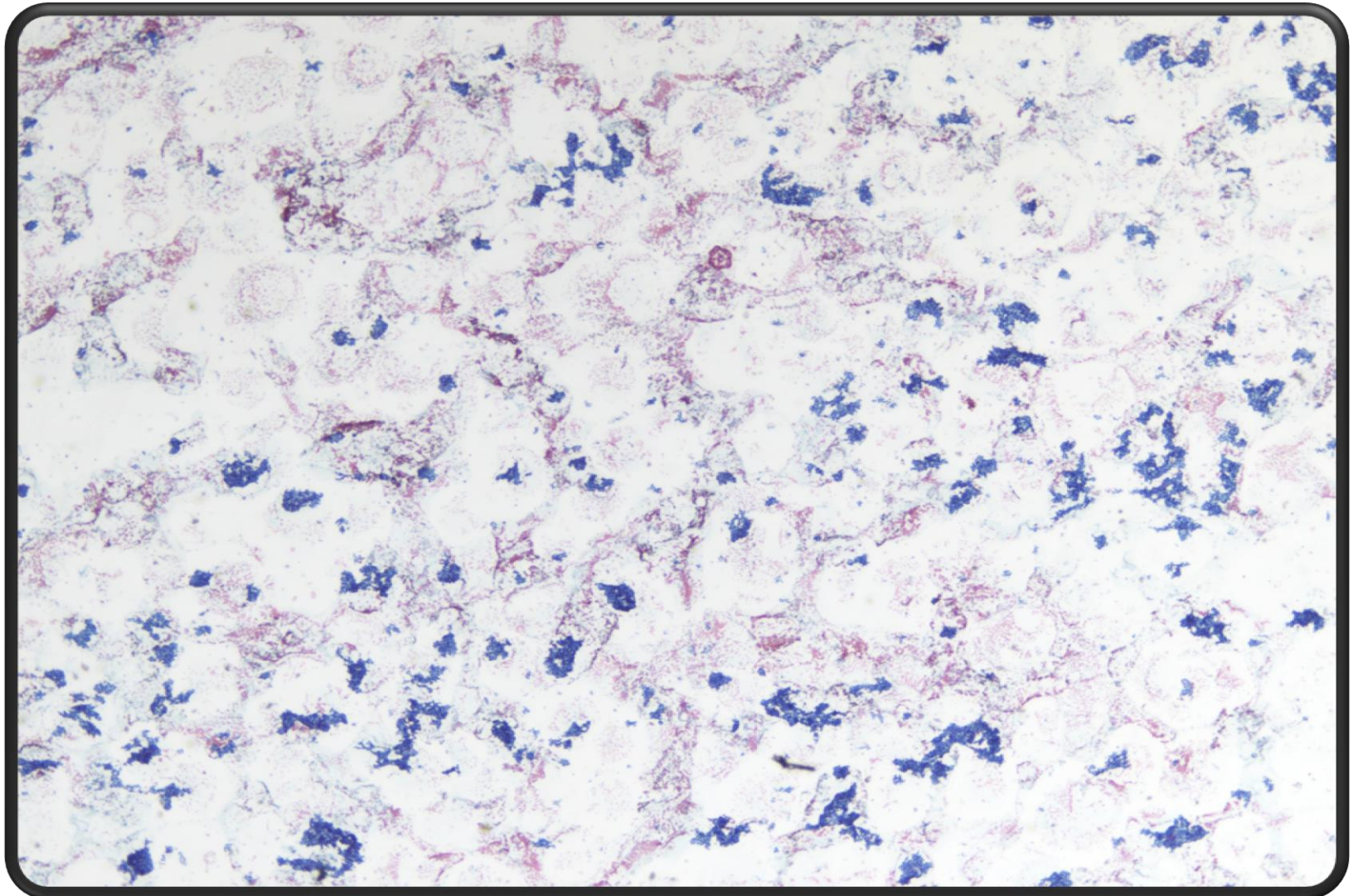
Colonic adenocarcinoma 5 years before.

Now a 3.5 cm mass in the right thyroid lobe.

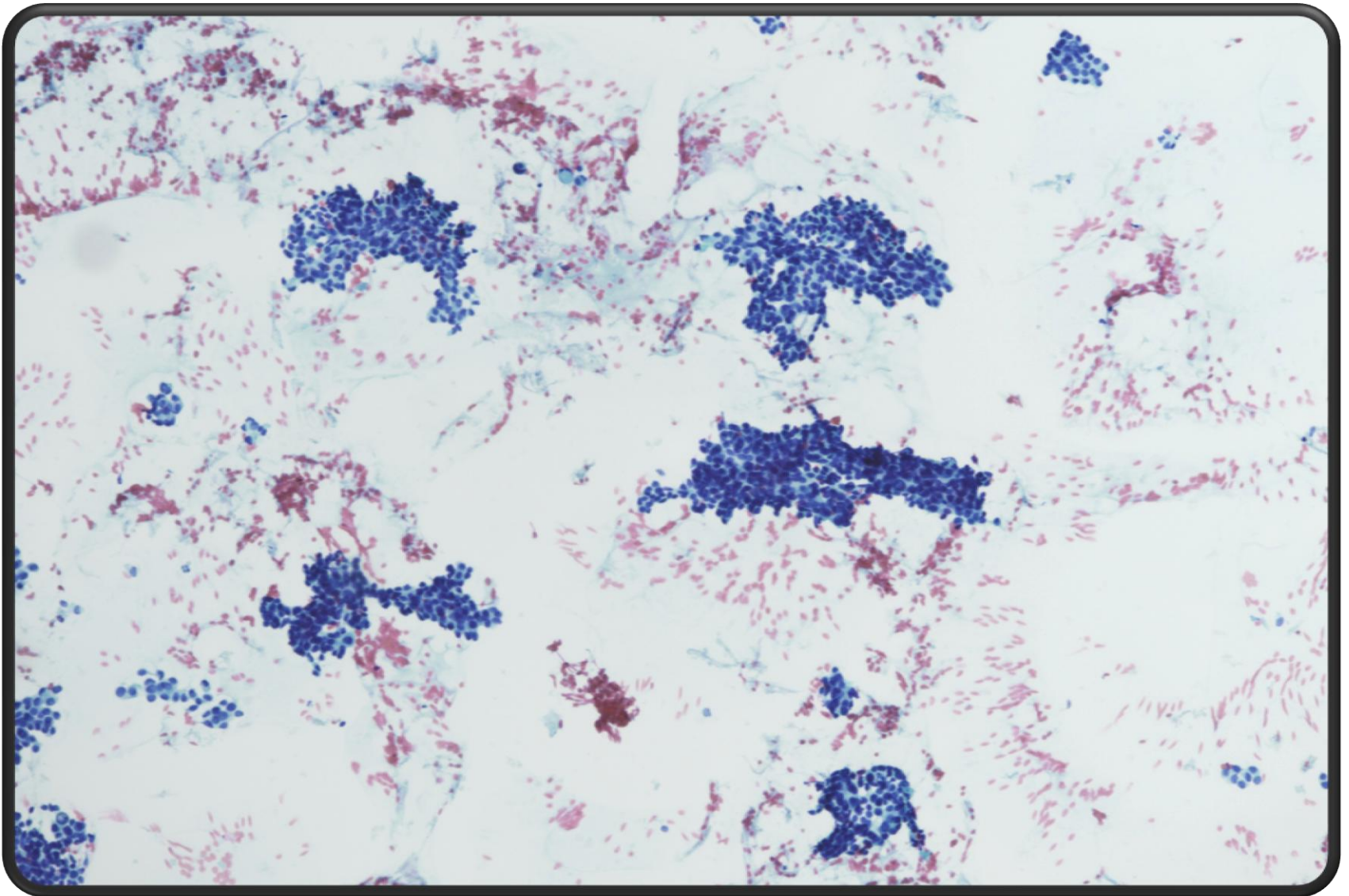


Thyroid FNA

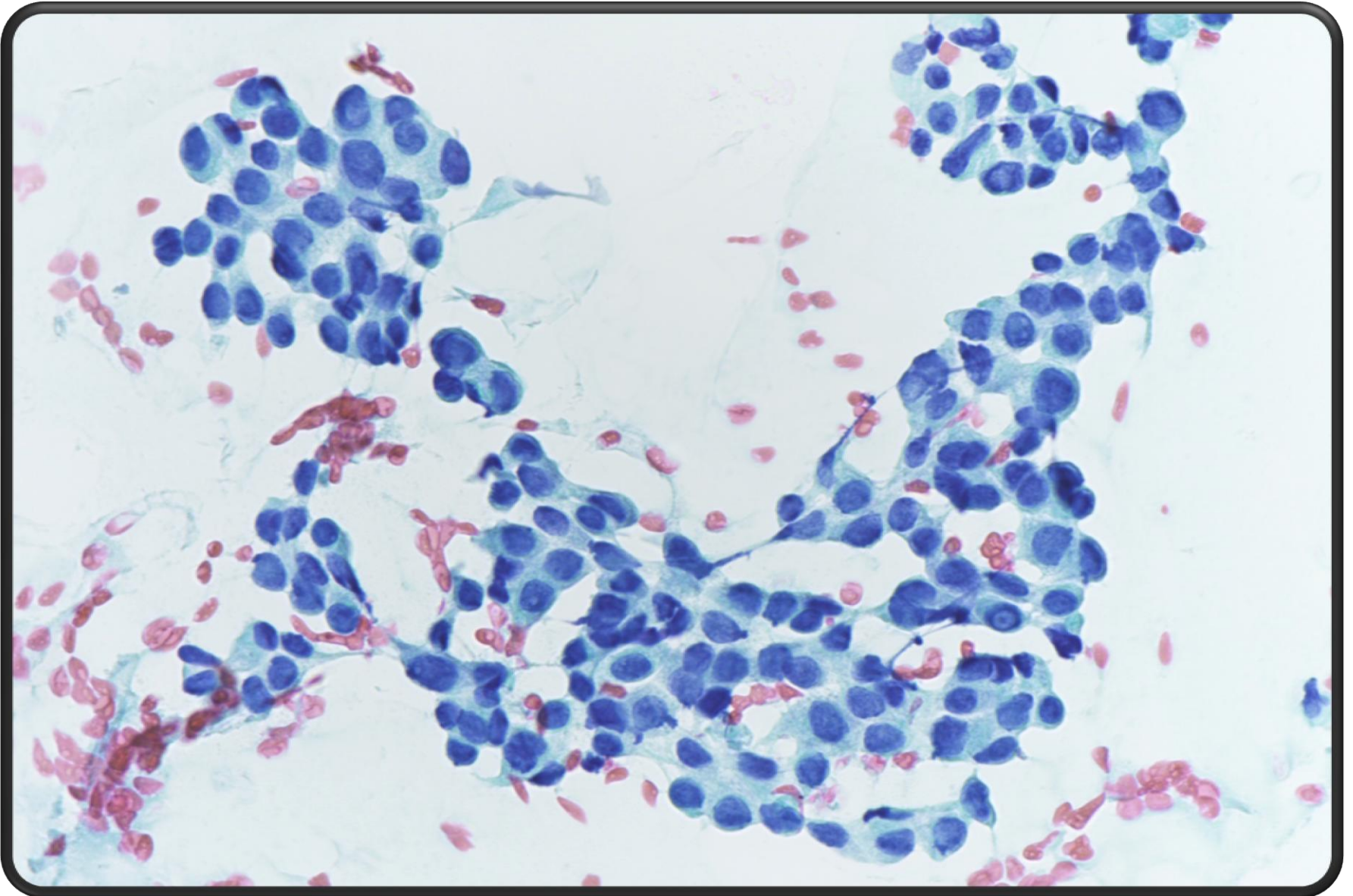
Pap, smear



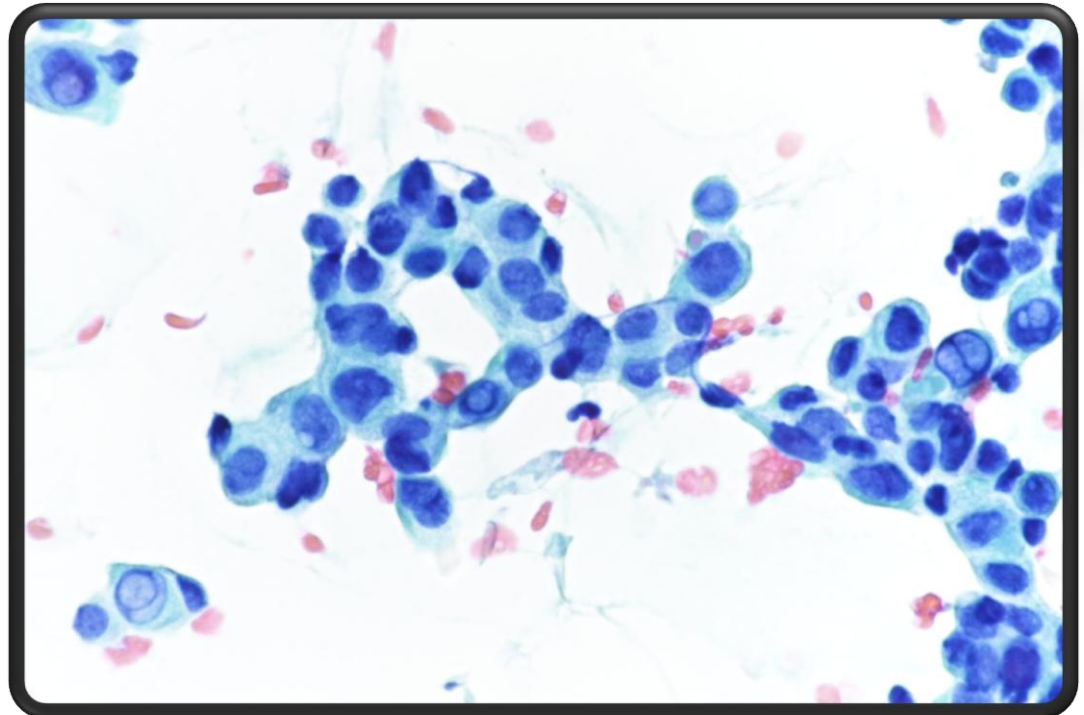
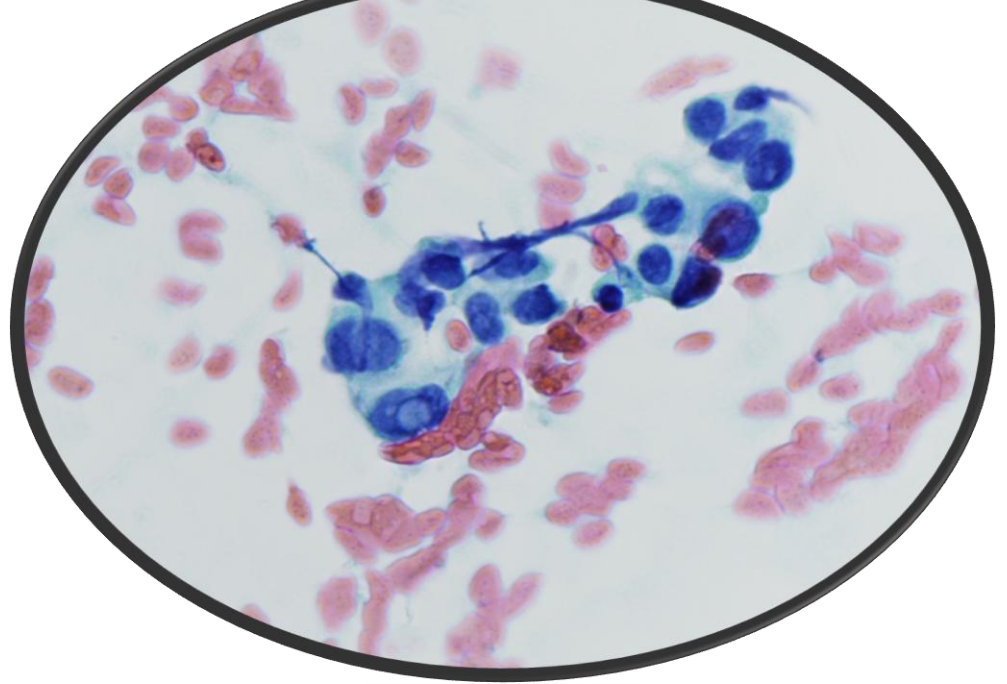
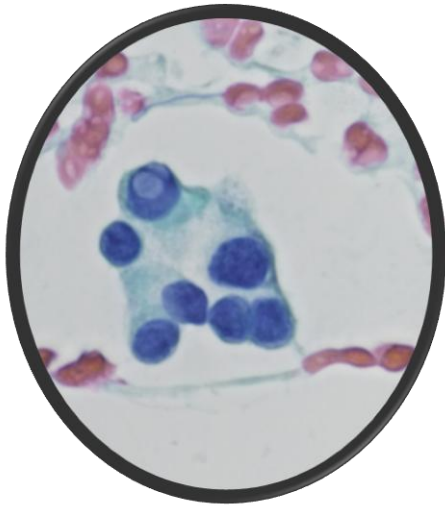
Pap, smear



Pap, smear



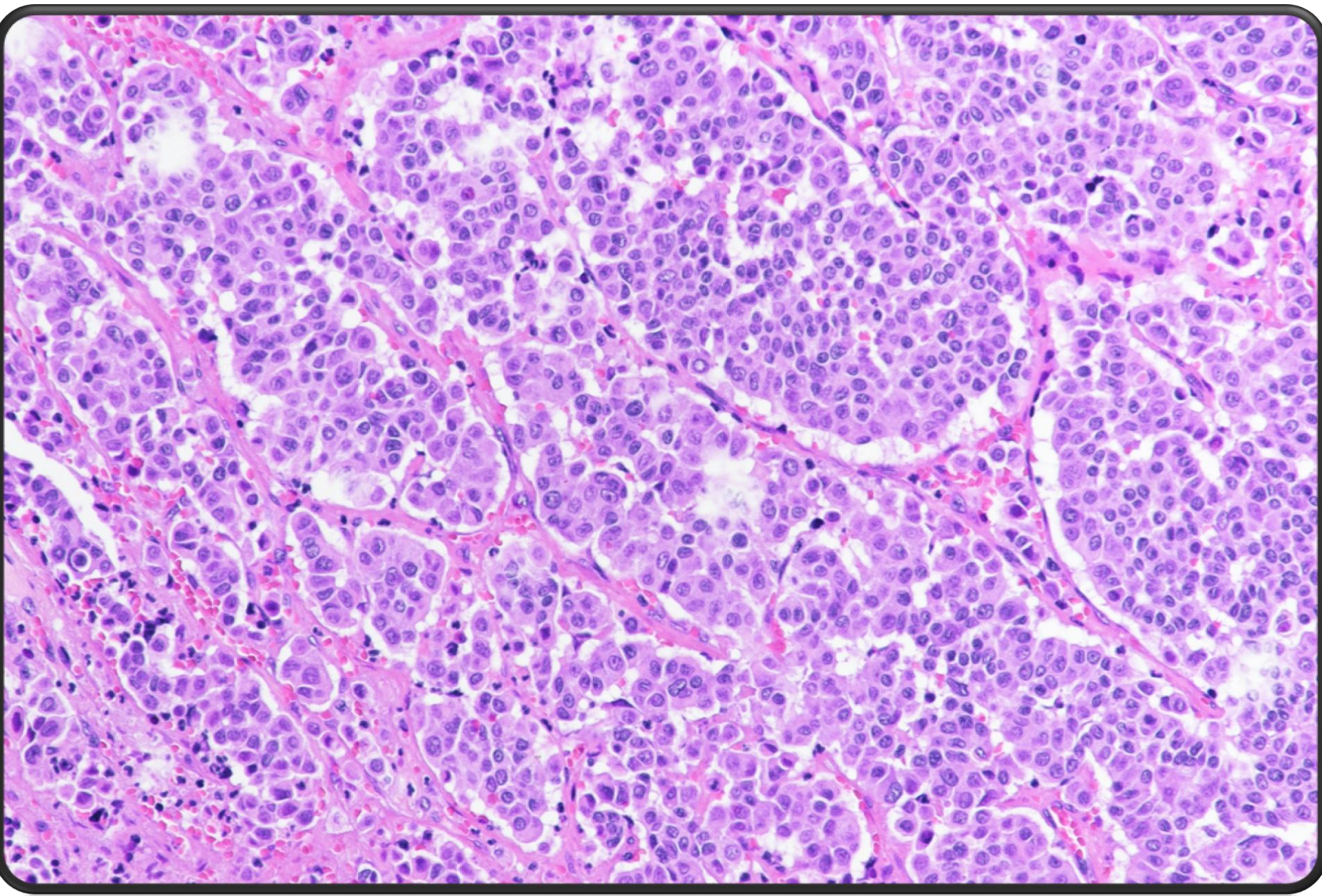
Pap, smear



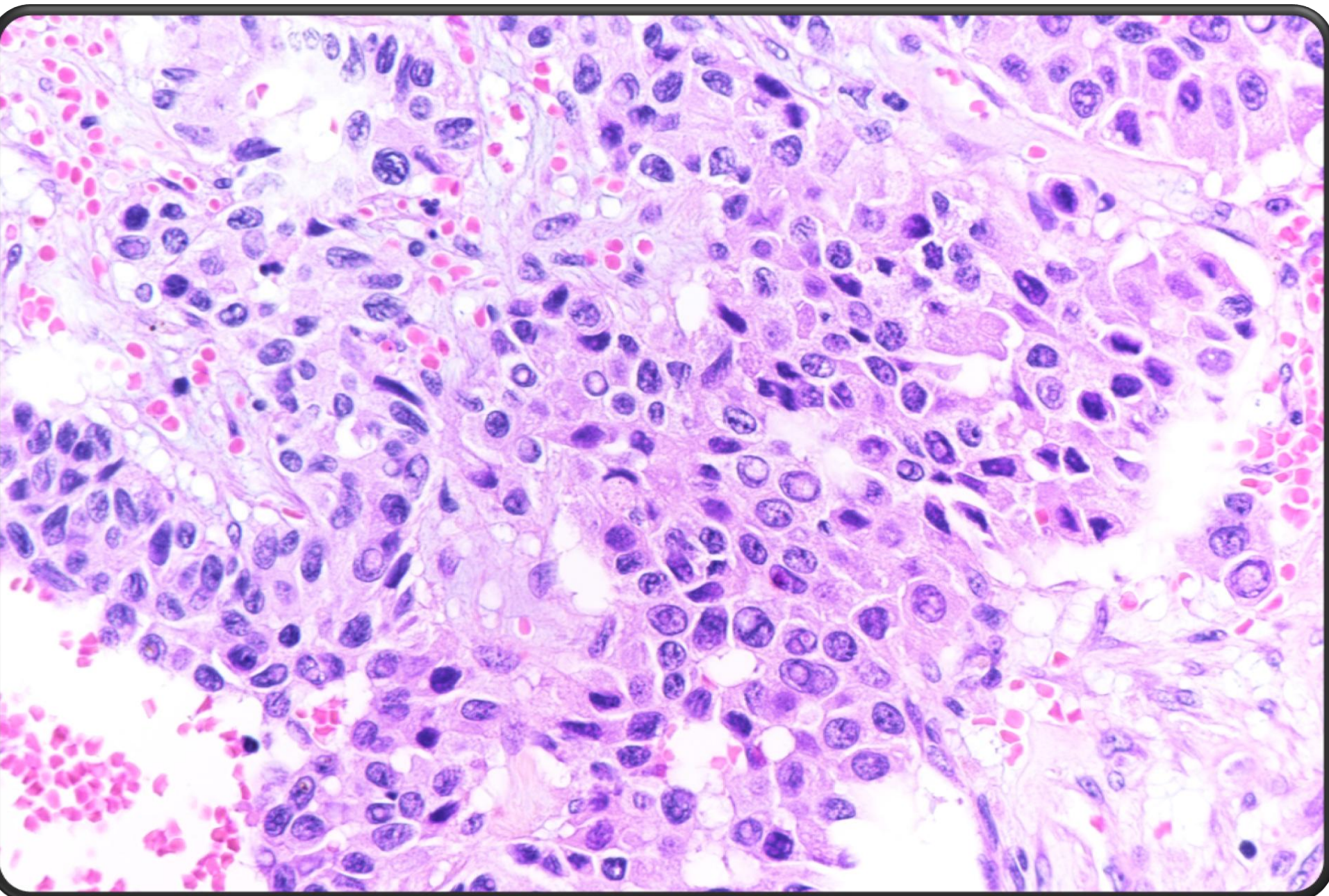
Cytological diagnosis:

Papillary thyroid carcinoma

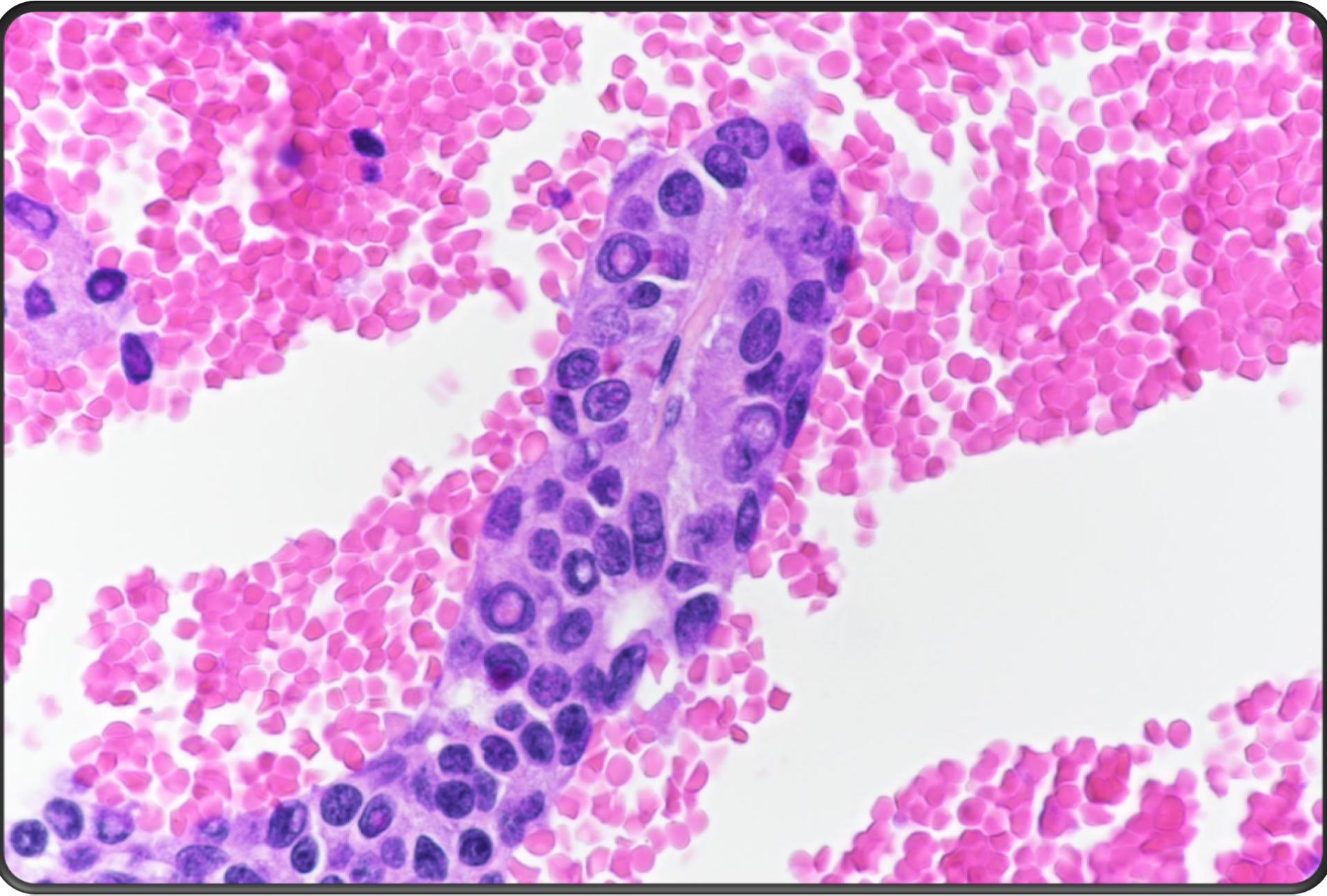
Histology



Histology



Histology

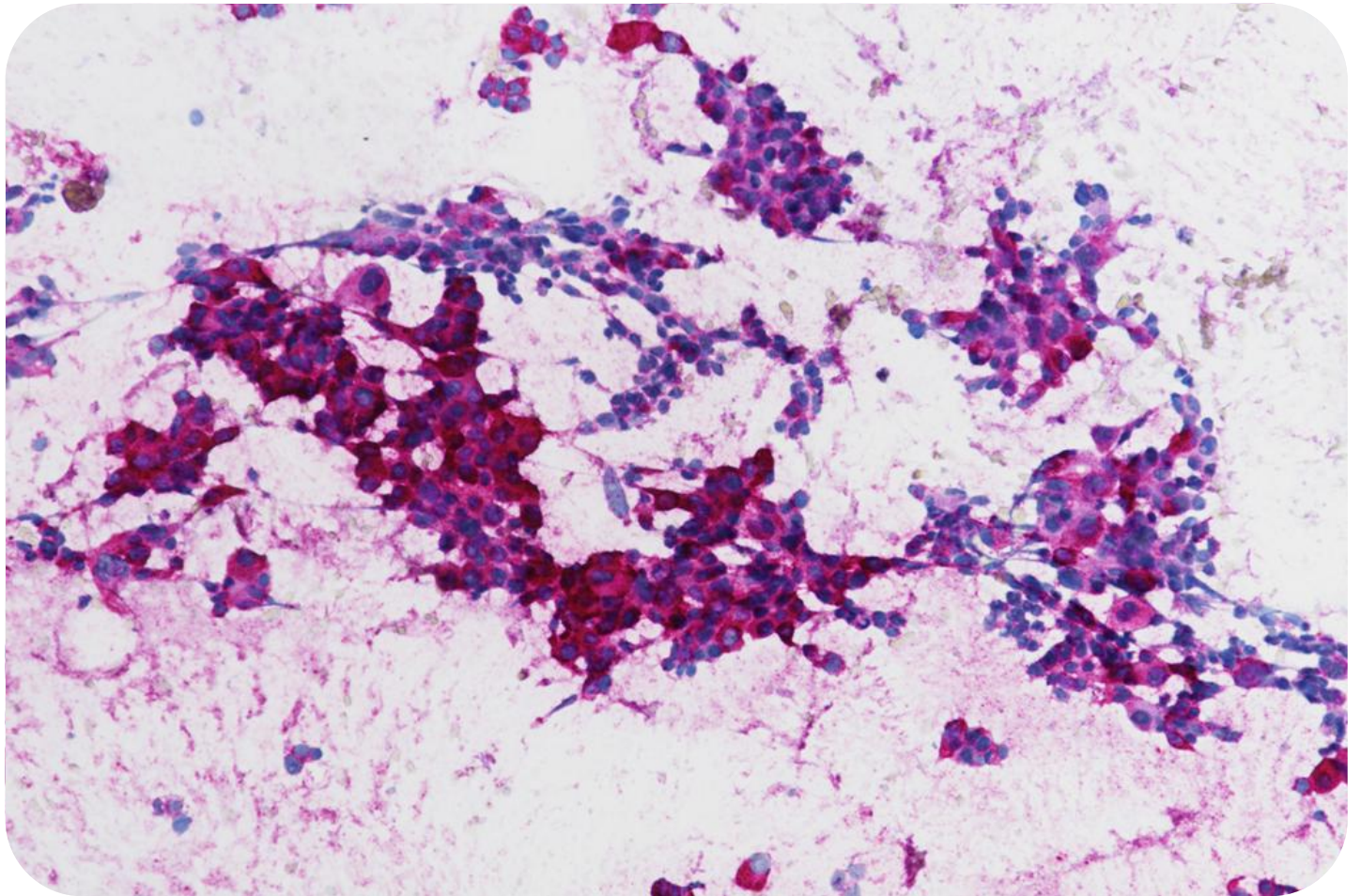


**Histological diagnosis
(after knowing the elevated blood
values of calcitonin and CEA):**

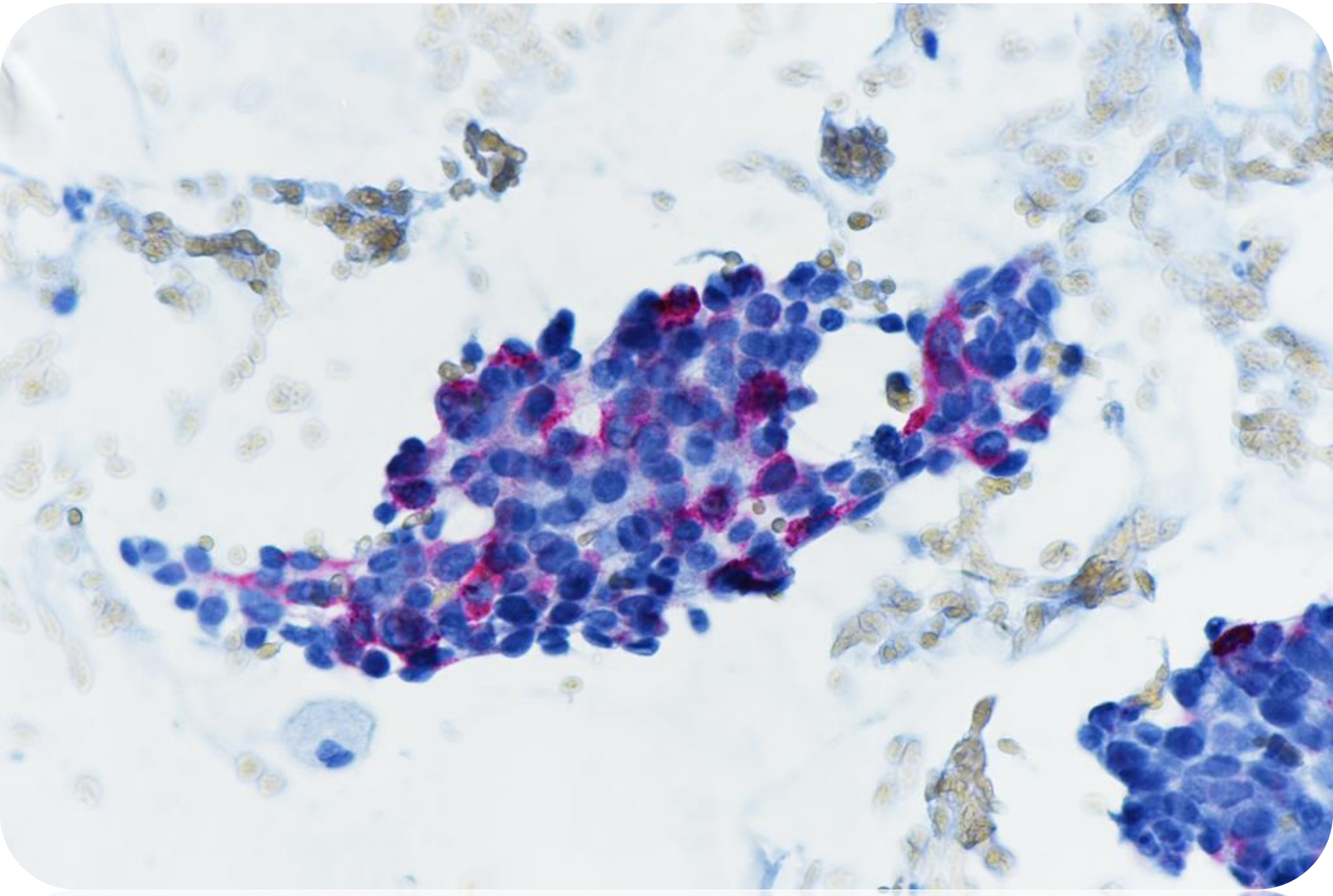
Medullary thyroid carcinoma

Immunohistochemistry on de-stained FNA slides

Calcitonin



Chromogranin



Revised cytological diagnosis:

Medullary thyroid carcinoma

Take home message:

**Abundance of nuclear pseudoinclusions does not exclude
a diagnosis of medullary thyroid carcinoma**